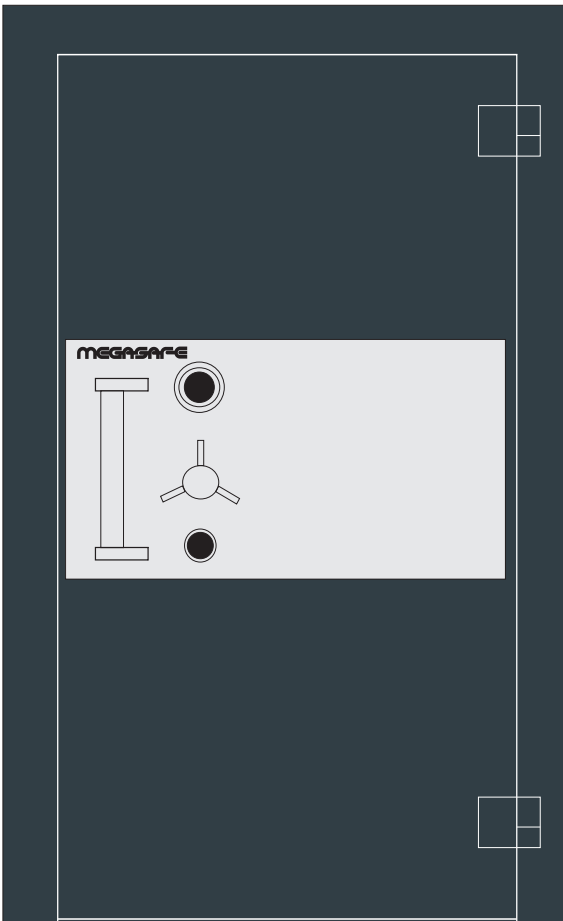


# IT 40

## Vault Door IT40 1½"



### DOOR

The IT40 vault door is constructed of inner and outer electrically welded steel plates enclosing 40mm (1 ½ ") of Megasafe's new superior high-density composite barrier material. In addition to this monolith, the entire door is covered by drill resistive "megasteel" anti penetration plates a matrix grid and our "Z" reinforcement bars. The entire door has overall thickness of 7.1" (180 mm). The combination of Megasafe's barrier materials provide the door a unique strength to protect against sophisticated and concentrated modern tool and torch attacks.

### Frame

Factory-casted reinforced composite barrier material around entire door frame making an exceptionally strong door jamb area providing no weak points for attack found only on MEGASAFE vault doors. A rail around the door closes into a channel on the door's frame in such a way making an extremely fire resistant vault door.

### Locks

The vault door is equipped with UL Listed mechanical or electronic combination lock and a 9-lever double bitted maximum security key lock.

### Boltwork and Relocking Mechanism

Megasafe's patented 3 way, laser-cut locking mechanism activates massive 35mm (1 3/8" ) bolts. Static bolts secure the door on the hinge side. A tempered glass plate protects the vital mechanism area. An attack by tool, torch or explosives will shatter the glass activating the individual relocking devices thus preventing the vault door being opened. Finally, each bolt locks into individual chambers in the frame.

# IT 40

## Vault Door

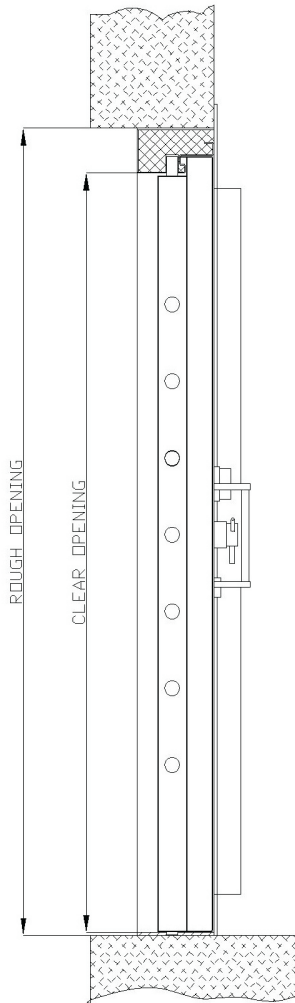


**Vault Door Recommended Rough (Wall) Opening:**  
Height: **2050mm**  
Width: **1030mm**  
Wall Thickness: **250mm**

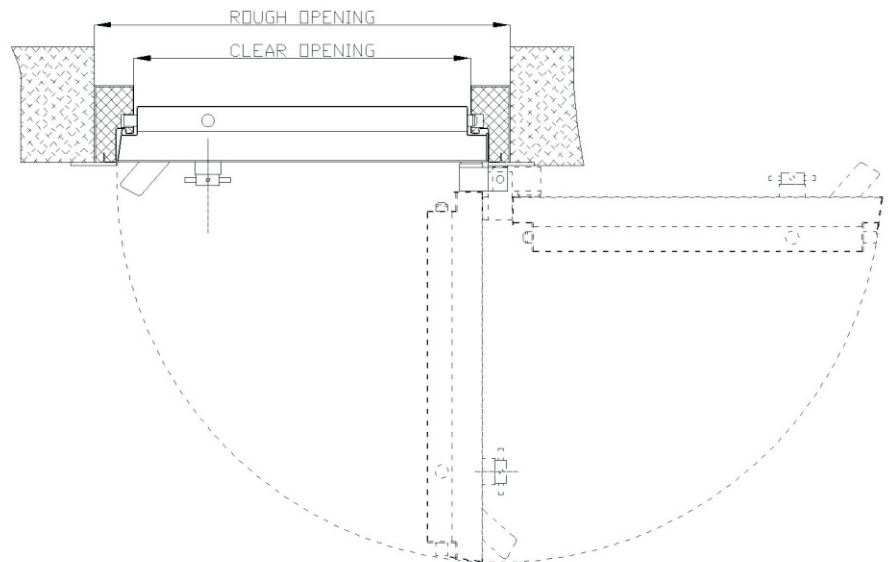
**Clear Opening:**  
Height: **1975mm**  
Width: **905mm**

*\*Tolerance of 15mm is included in the dimensions*

### Side Elevation



### Top Elevation



**Optional EMERGENCY DOOR**  
**Recommended Rough (Wall) Opening:**  
Height: **1025mm (40.4")**  
Width: **1025mm (40.4")**  
Wall Thickness: **250mm (10")**

Authorized Dealer:

